

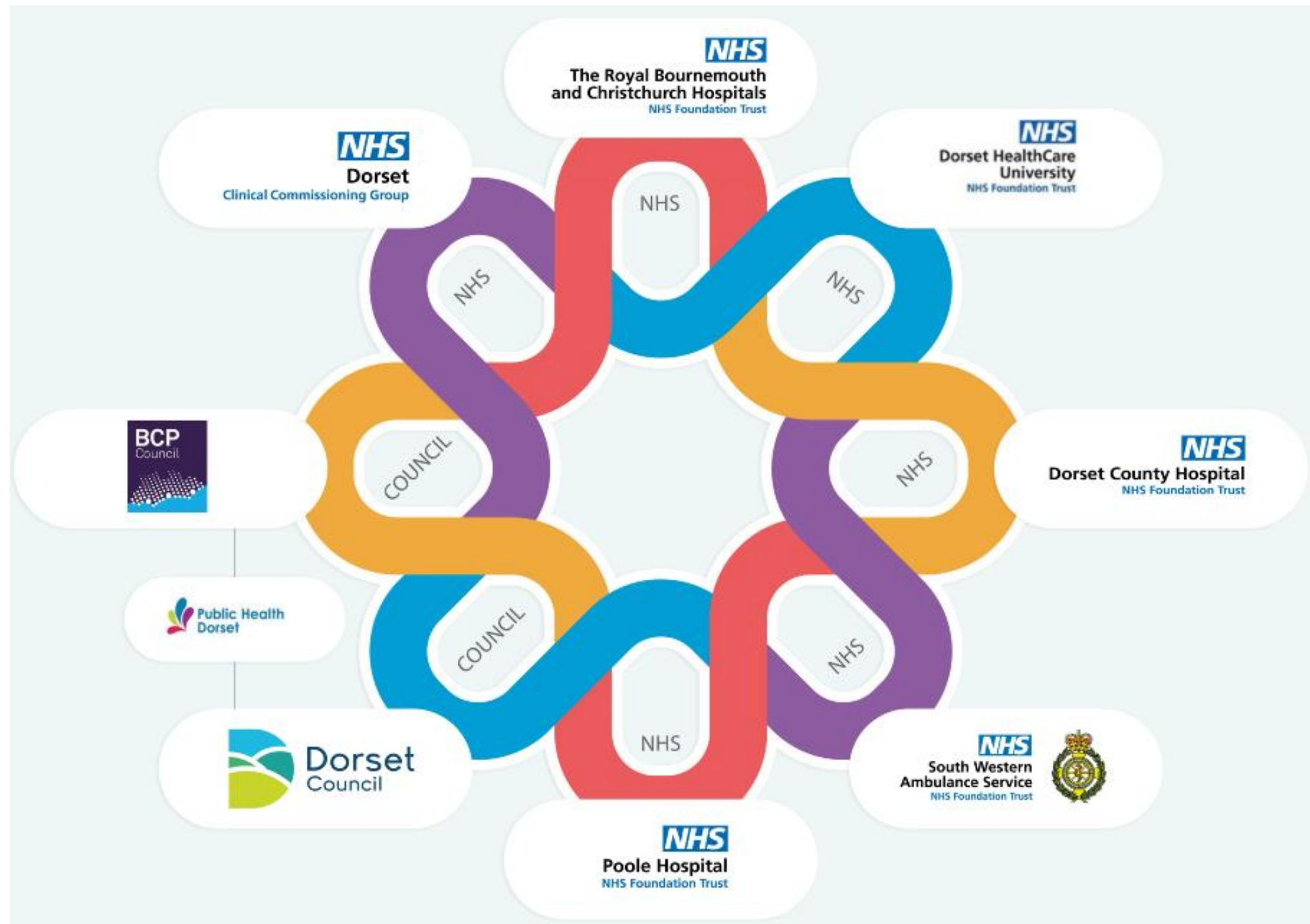
Bournemouth, Christchurch, Poole Council Health and Adult Overview and Scrutiny Committee

Dorset Integrated Care System Update

22 July 2019



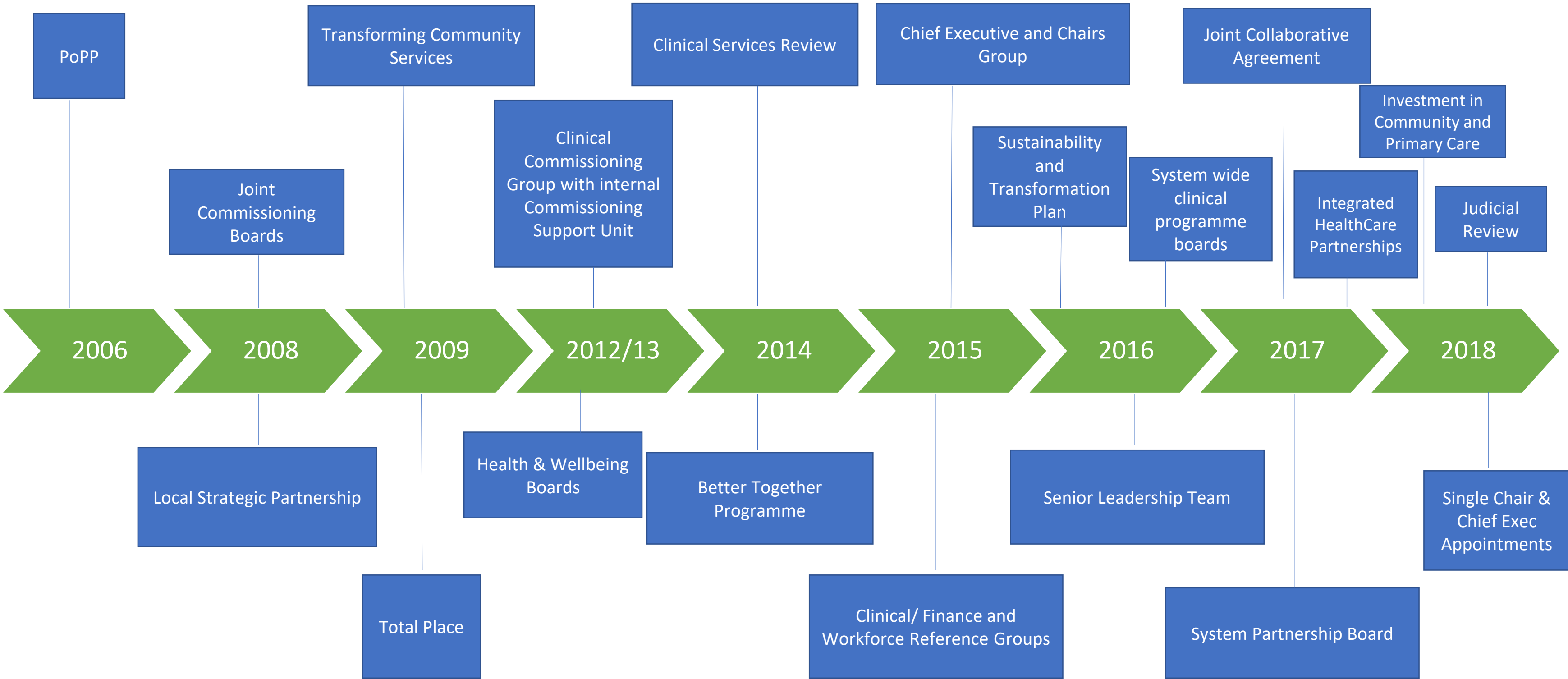
Dorset Integrated Care System



Dorset health and care partners working together to improve health and wellbeing of the residents of Dorset

Our Dorset
Your Local NHS and Councils Working Together

History of working together

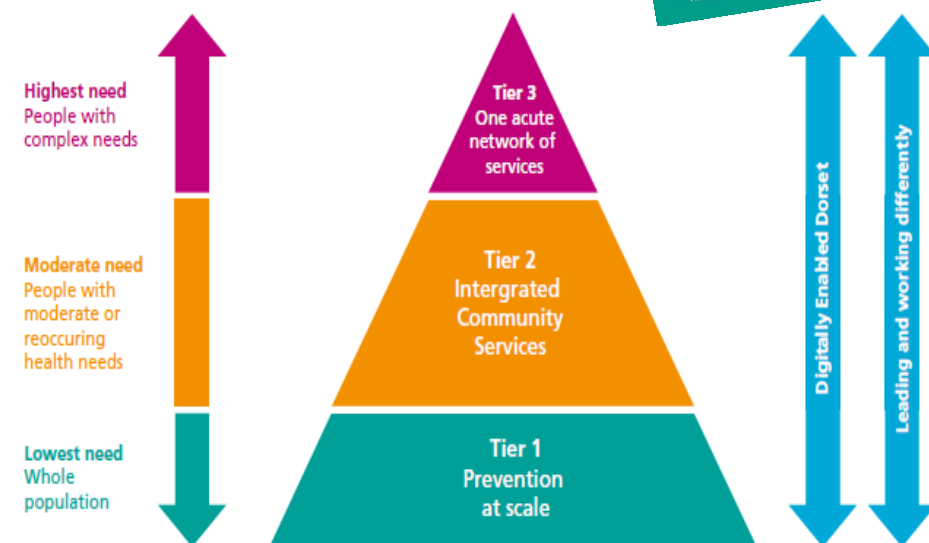


Sustainability and transformation plan 2016-2021



This was aimed at three gaps

1. Finance
2. Health and wellbeing
3. Care and quality



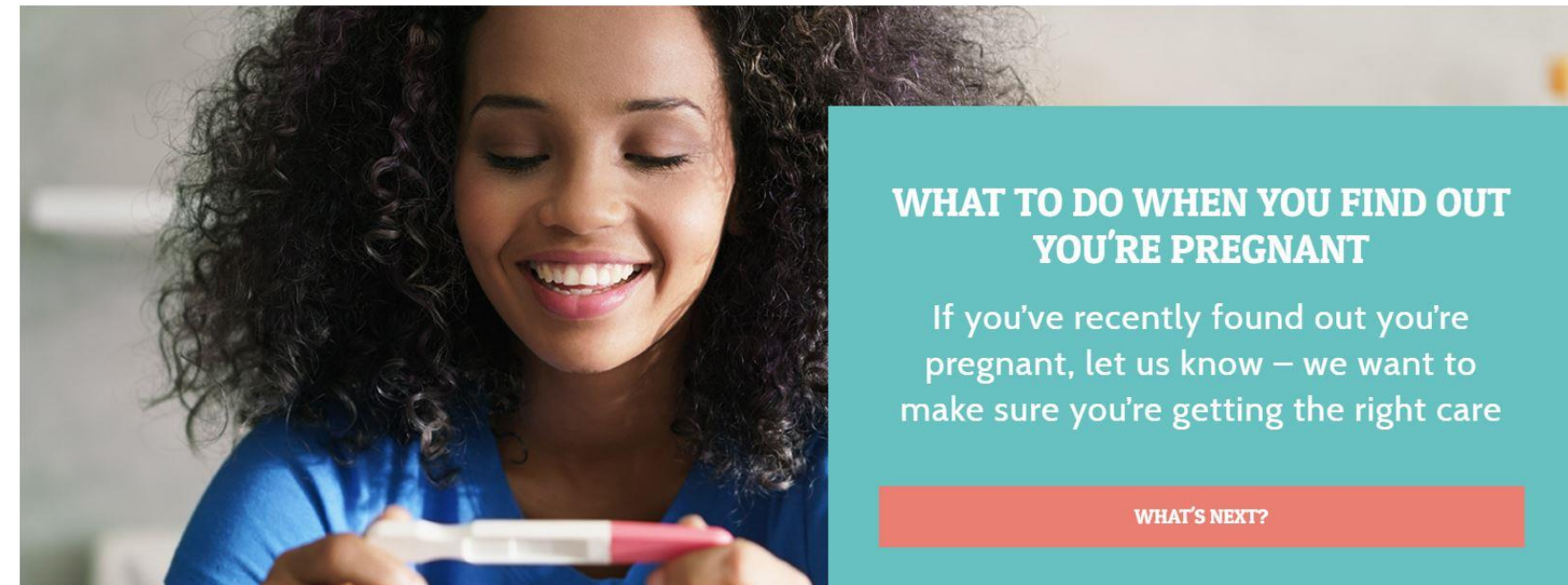
There is a lot to be proud of

- We have collaborative agreement on a single Dorset Care record
- Three main hospitals and services working closer together
- We have £6m recurrent investment for integrated locality teams
- System wide personalised approach to safeguarding through adults and children's safeguarding boards
- Collaborative practice growing 200+ volunteers in primary care offering non-medical solutions
- LiveWell Dorset digital platform is live and team has trained over 1000+ health and care staff in wellbeing skills



There is a lot to be proud of

- Maternity matters website bringing all information together in one space
- Incentive schemes to tackle variation and poor outcomes in primary care
- Acute mental health pathway changes, alternatives to admission through a retreat and community front door
- Children across pan Dorset are achieving higher 'good levels of development at age 5' compared with the national average
- Supporting people to remain safe and independent in their own homes
- WaitLess app, giving directions to and up-to-the minute waiting times for urgent care treatment centres/A&E



An advertisement for the NHS WaitLess app. On the left, a smartphone displays the app's interface, which includes a map of Dorset with numbered locations, a list of services like 'Blandford Community Hospital' with travel and wait times, and a bottom navigation bar with icons for a plus sign, pharmacies, dentists, and GP. To the right of the phone, the text '#WaitLessDorset' is displayed in large white font, followed by 'Download the WaitLess app' and 'With up-to-the-minute travel info and the latest waiting times at Dorset's urgent and emergency care services'. Below this is the URL 'For more information visit ourdorset.nhs.uk/waitless'. The NHS logo is in the top right corner. At the bottom right are buttons for 'Download on the App Store' and 'GET IT ON Google Play'.

Prevention at scale



LiveWell Dorset has...

Helped **20,000**



 **18,160**
Website users

 **924**
Followers

2,268
new clients 
registered in 2018

14 collaborative practices actively
recruiting 'practice champions'



Health and well-being workforce plans
in place across **4** foundation trusts



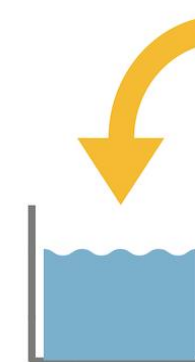
2 online tools for **11-19** yr olds
'Chat health' for physical health
support and 'Kooth' for help with
emotional well-being



31 schools registered
for the Daily Mile



5,000
children running daily



Public Health feeding into the
planning processes in Dorset



8 air quality monitors installed across
Dorset Poole & Bournemouth 

13
locality
link
workers
across
the county

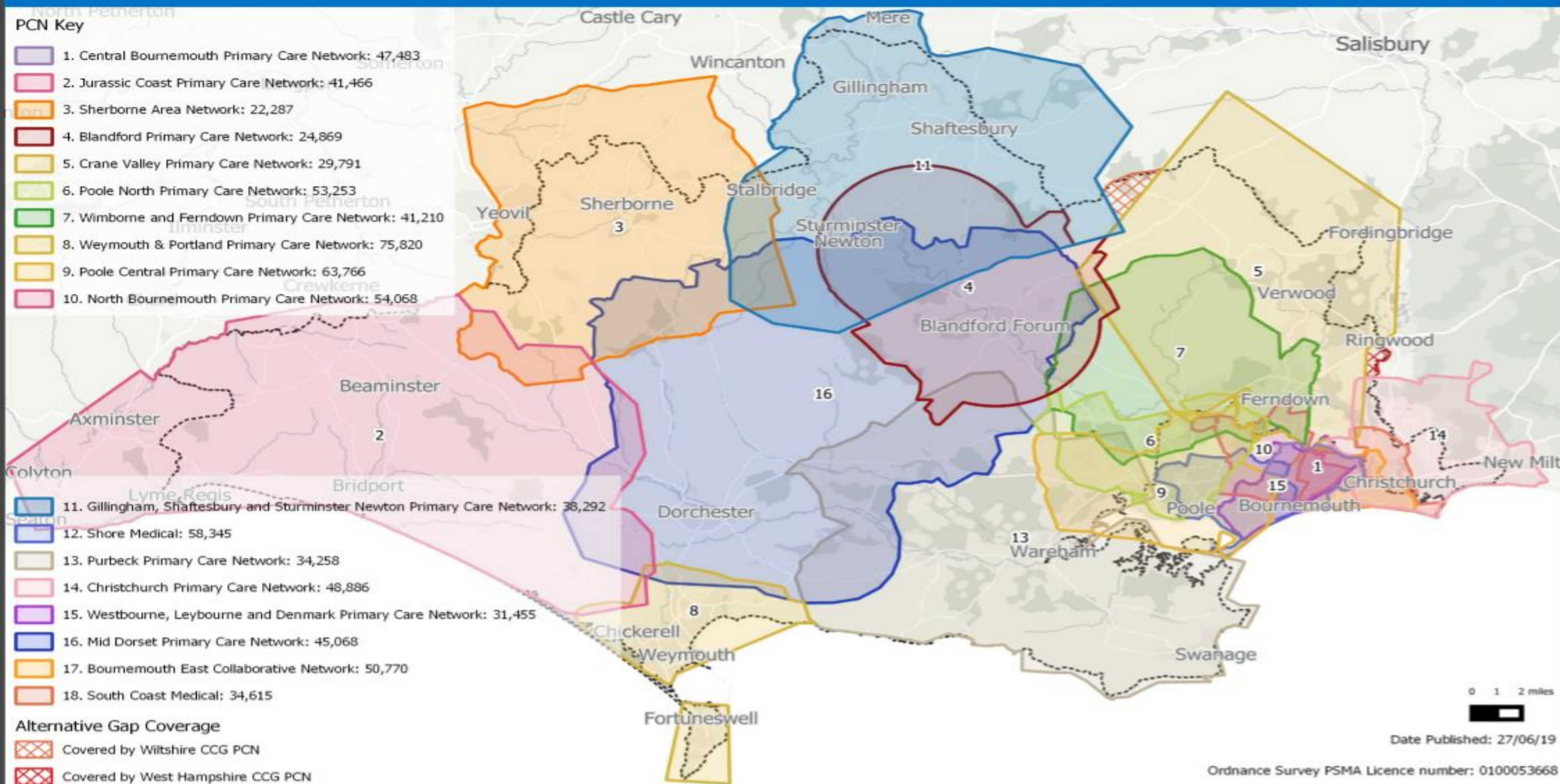


1,500 letters sent to patients at high risk of diabetes and **5** prevention courses run

Primary Care within a Dorset Integrated Care System

- Development of Primary Care Networks (PCNs) to serve all patients in Dorset – taking a **population health management approach** to target care
- Primary Care Organisational Development– **stronger system voice**, building **capacity and capability** to provide sustainable primary care services in the community
- Embed new **workforce** such as clinical pharmacists, social prescribing link workers, physiotherapists, physician associates and community paramedics over the next five years
- Integrated community services – continuing to **invest in and support** integrated teams
- Infrastructure planning – **technology enabling care** and developing the **Primary Care and community hub estate** to be able to deliver new care models

Primary Care Network Boundaries



Primary Care Delivery Plan

Initiatives for Year 1 (2019 - 2020)

- Developing the maturity of Primary Care Networks;
- Commissioning at-scale for population health-based outcomes
- Delivering an Annual Programme of Quality Improvement
- Investing in integrated care teams and improving access to General Practice services
- Understanding local population needs, addressing inequalities in health and access to services through population health management
- Supporting self-care and simple life style advice

Mental Health Update

- Mental Health Acute Care Pathway (ACP) development of:
 - connection services;;
 - recovery beds open;
 - Safe Stop;
- Children and Young People
 - Local transformation plan- THRIVE framework
 - New models of care-crisis pathway
- SMI Physical Health Checks- plans in place to improve reach
- Psychiatric liaison review – engagement events planned for July and August 2019
- Mental Health Rehabilitation Service- co-producing model of care;
- Improving access to psychological therapies- co-producing blended model (Hub/ Step down units and community rehab)

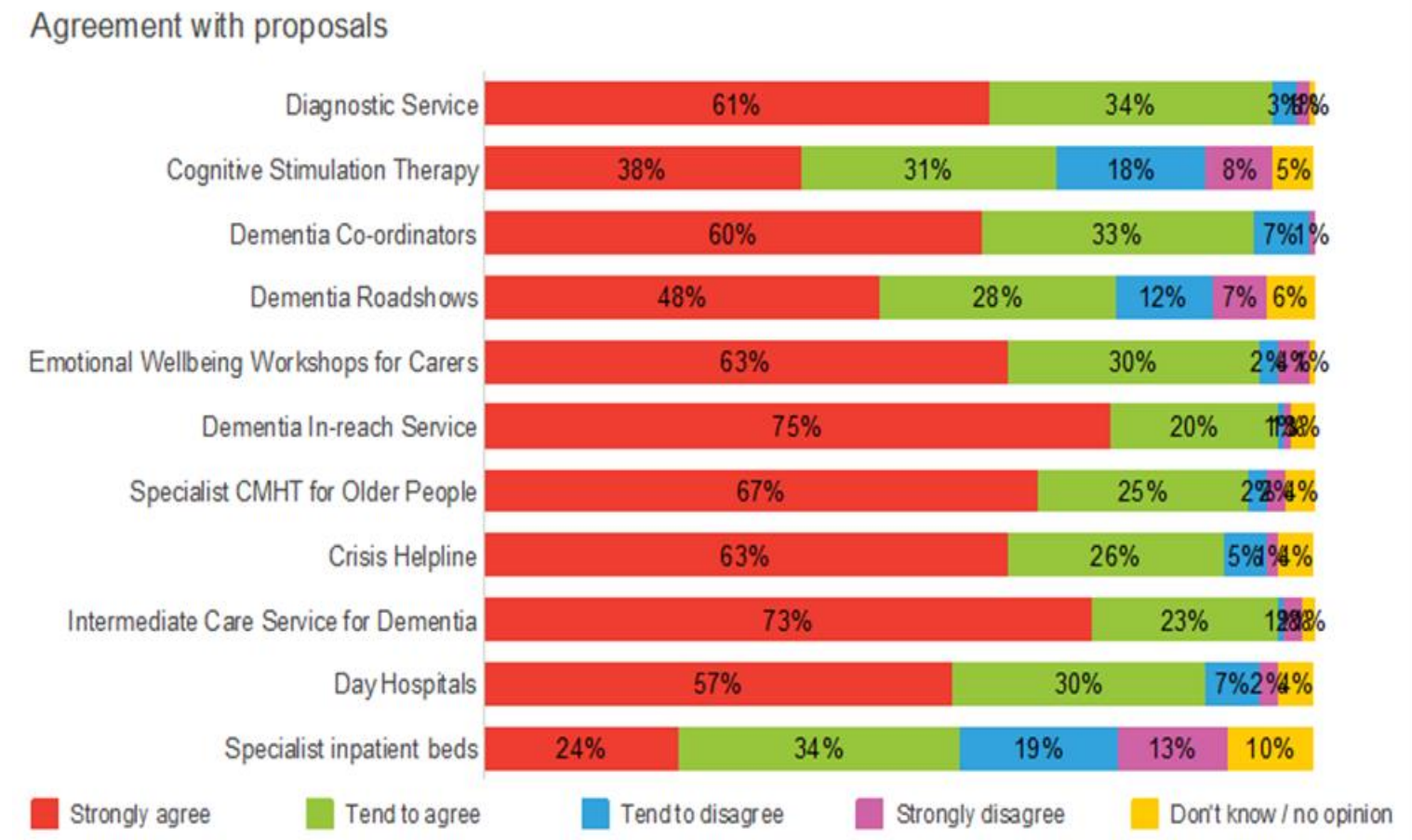
Dementia services review

- NHSE Stage II Assurance completed
- Public Consultation commenced 17th June
- 8 week period up to 11th August

Dementia Diagnosis

- System continues to face challenges
- Work commenced to look at rate of diagnosis in care homes
- Call with national clinical lead scheduled to review actions to date and support offer

Consultation feedback to date



NHS Long term plan- key features



- Life course approach to improvements in outcomes from ensuring everyone gets the best start in life to delivery of world class care for major health problems to supporting people to age well.
- To deliver the ambitions need to focus on:
 - Doing things Differently;
 - Tackling prevention and health inequalities;
 - Backing our workforce;
 - Making better use of data and digital technology;
 - Getting the most out of taxpayers' investment in the NHS Investment

The NHS Long Term Plan



Our 
Dorset
Your Local NHS and Councils Working Together

A vision for Dorset

Build a genuine plan for the system and not just the NHS

Greater focus on tackling the wider determinants of health and improving Health and Wellbeing outcomes

Putting individuals and communities at the heart of our plans

Underpinning our plan we need to ensure we have the right workforce in the right place and we maximise and invest in digital and new technologies



These are some of the main themes we
are considering for Dorset:





Our Dorset Looking forward

Individuals

Enabling people to take more control and responsibility for their care, designing services around a person to meet their individual needs.



Our Dorset Looking forward

Communities

A focus on other factors that affect our health such as employment, housing and family relationships. Helping all residents get the best start in life, living well into adulthood and ageing well.



Our Dorset Looking forward

Living well

**Providing more care in
the community and out of
hospitals, so people can get
the right care, at the right time
and from the right person.**



Our Dorset Looking forward

Wellbeing

Improving health outcomes for all residents so we all have equal opportunities to live well, no matter where we live or what our circumstances are.



Our Dorset Looking forward

Workforce

Increasing recruitment and training for staff, with a focus on leadership and mental health and wellbeing. Making public services and the wider health and care sector a better place to work.



Our Dorset Looking forward

Digital innovation

Using digital technology to
deliver services in new ways,
giving people more and better
information about health
and wellbeing.

Engagement

The national picture

Your local NHS and councils are planning how to improve health and wellbeing in Dorset.

This is being done in-line with the NHS 'Long-term Plan', which sets out national priorities and ambitions for the next ten years.

It shows how the NHS and local councils will continue to provide high quality care across the country and continues from the five-year plans that have shaped services up until now.

How you can get involved

We want to know what you think and what we need to consider as we work to improve health and wellbeing within our priority areas.


For more information and to send us your views complete the survey at:

www.ourdorset.nhs.uk/lookingforward

Our survey is also available in Easy Read online.


Our Dorset Looking forward

Get involved and have your say on our priorities in Dorset



Our Dorset
Your Local NHS and Councils Working Together





Our Dorset Looking forward

Living well

Get involved and have your say on our priorities in Dorset

www.ourdorset.nhs.uk/lookingforward



Our Dorset
Your Local NHS and Councils Working Together

Timeline- ICS Plan Development

